

Model: NAD 30S/30/40 DF67		Date: 31-Oct98	No.: 1
Modified Article: Parts catalog correction		Prepared by: E. Fukuyama	
From: GTS and S Field Information Dept.			
Reason for Modification:	<input checked="" type="checkbox"/> Parts catalog correction	<input type="checkbox"/> Vendor change	<input type="checkbox"/> To meet standards ()
	<input type="checkbox"/> To facilitate assembly	<input type="checkbox"/> To improve reliability	
	<input type="checkbox"/> Part standardization	<input type="checkbox"/> Other	

Please correct your parts catalog for DF67.

Old part number	New part number	Description	Qty	Int	Page	Index	Note
A6804321	A6804331	Exit Tray	1	-	5	13	
A6804331	A6804321	Exit Tray Holder	1	-	3	15	

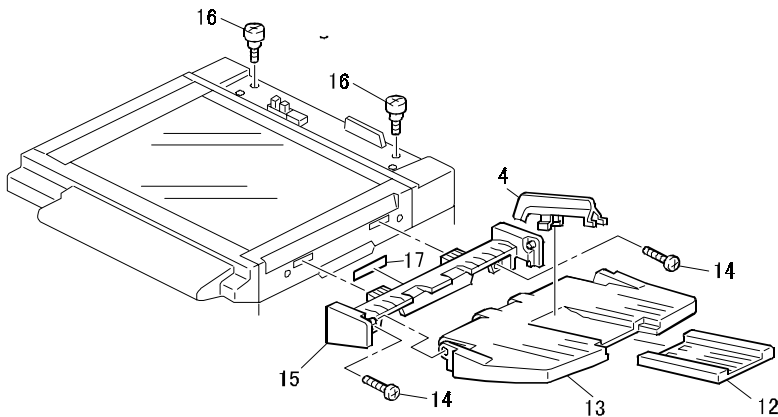
Model: NAD 30S/30/40 DF67		Date: 31-Oct-98	No: 2
Modified Article: Exit Tray		Prepared by: M.Tsuyuki	
From: GTS and S Field Information Dept.			
Reason for Modification:	<input checked="" type="checkbox"/> Parts catalog correction <input type="checkbox"/> Vendor change <input type="checkbox"/> To meet standards <input type="checkbox"/> To facilitate assembly <input type="checkbox"/> To improve reliability () <input type="checkbox"/> Part standardization <input type="checkbox"/> Other		

Please correct your ADF parts catalog as follows.

Part number	Old Description	New Description	Page	Old Index	New Index
A6804331	Exit Tray Holder	Exit Tray	5	15	13
A6804321	Exit Tray	Exit Tray Holder	5	13	15



1. EXTERIOR (A680)



MODEL NAME	V/Hz	DESTINATION	CODE	SERIAL NUMBER
DF67	115/60,220/50	All (Ricoh)	A680-17	-
DF67	115/60,220/50	All (NRG)	A680-22	-
DF67	115/60,220/50	All (Infotec)	A680-26	-
DF67	115/60,220/50	All (Lanier)	A680-55	-
DF67	115/60,220/50	All (Ricoh)	A680-57	-
DF67	115/60,220/50	All (NRG)	A680-62	-

Model: NAD 30S/30/40 DF67		Date: 15-Feb-00	No.: MA680003
Modified Article: Drive Gears		Prepared by: E. Fukuyama	
From: Technical Services Dept., GTS Division			
Reason for Modification:	<input type="checkbox"/> Parts catalog correction <input type="checkbox"/> To facilitate assembly <input type="checkbox"/> Part standardization	<input type="checkbox"/> Vendor change <input checked="" type="checkbox"/> To improve reliability <input type="checkbox"/> Other	<input type="checkbox"/> To meet standards ()

SYMPTOM

Original feed jam: The original is jammed just after the front edge is fed about 10 cm (A4/LT size) onto the exposure glass.

POSSIBLE CAUSE

The friction between the Gear-16Z and its shaft increases and exceeds the maximum torque of the feed motor. This is due to tiny burrs on the shaft.

Countermeasure

The inside diameter of the gears has been changed.

Old part number	New part number	Description	Q'ty	Int	Page	Index
A6802152	A6802154	Gear - 16Z	1	X/O	17	16
A6802151	A6802153	Gear - 16Z	1	X/O	17	18
A6802141	A6802142	Gear - 16Z	1	X/O	17	19

MODEL NAME	V/Hz	DESTINATION	CODE	SERIAL NUMBER
DF67	115/60	All (SAVIN)	A680-15	1B38870001
DF67	115/60, 220/50	All (Infotec)	A680-26	3Q7870001
DF67	115/60, 220/50	All (Ricoh)	A680-57	A7718870228
DF67	115/60, 220/50	All (NRG)	A680-62	AS08870001

Model: NAD 30S/30/40 DF67		Date: 29-Feb-00	No.: MA680004
Modified Article: Spring Plate		Prepared by: E. Fukuyama	
From: Technical Services Dept., GTS Division			
Reason for Modification:	<input type="checkbox"/> Parts catalog correction	<input type="checkbox"/> Vendor change	<input type="checkbox"/> To meet standards ()
	<input type="checkbox"/> To facilitate assembly	<input type="checkbox"/> To improve reliability	
	<input checked="" type="checkbox"/> Part standardization	<input type="checkbox"/> Other	

To standardize the part with other models, the spring plate has been changed from A5481135 to B3011136 with the interchangeability O/O.

Old part number	New part number	Description	Q'ty	Int	Page	Index
A5481135	B3011136	Spring Plate	1	O/O	11	18

Model: NAD 30S/30/40 DF67		Date: 11-Jul-00	No.: MA680005
Modified Article: Relay Harness-Registration Sensor and Pull Out		Prepared by: E. Fukuyama	
From: Technical Services Dept., GTS Division			
Reason for Modification:	<input checked="" type="checkbox"/> Parts catalog correction <input type="checkbox"/> To facilitate assembly <input type="checkbox"/> Part standardization	<input type="checkbox"/> Vendor change <input type="checkbox"/> To improve reliability <input type="checkbox"/> Other	<input type="checkbox"/> To meet standards ()

The following part number should be corrected. Please correct your parts catalog.

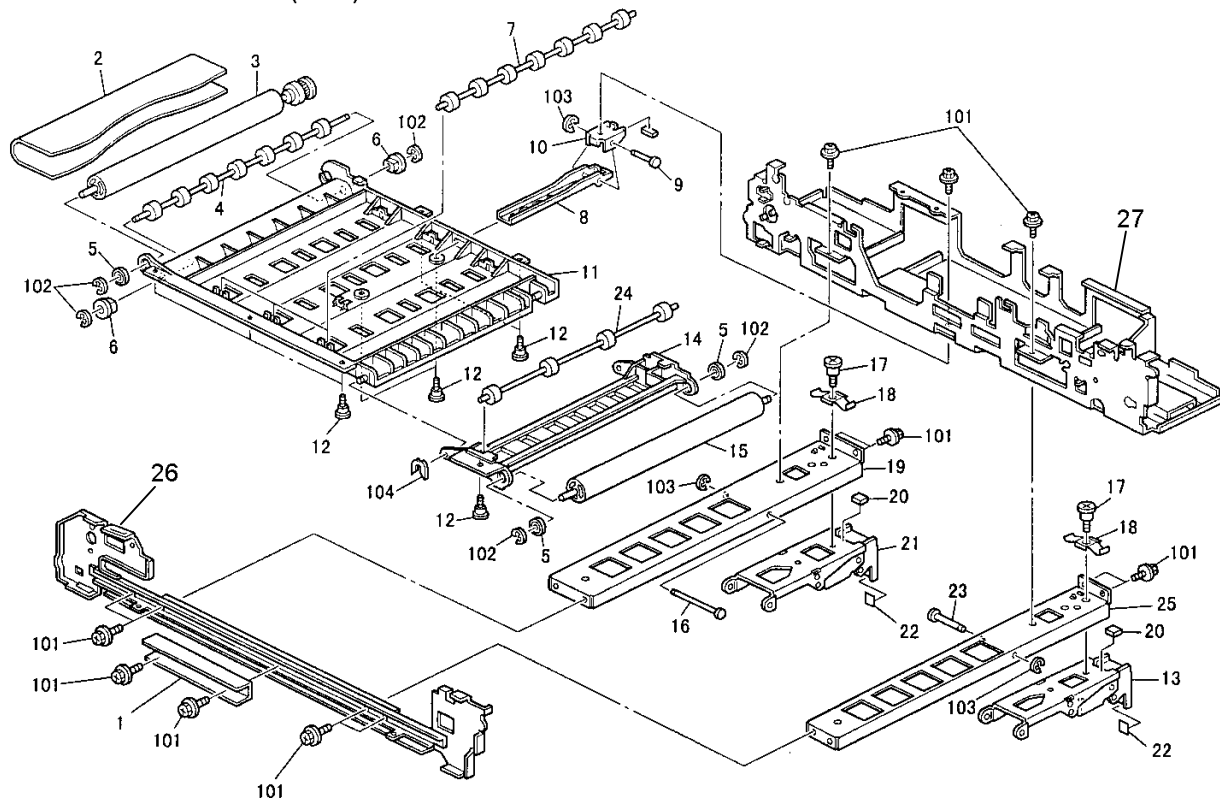
Old part number	New part number	Description	Q'ty	Int	Page	Index	Note
A6805890	A6805885	Relay Harness – Pull Out	1	-	7	14	
A6805885	A6805890	Relay Harness – Registration Sensor	1	-	9	30	

Model: NAD 30S/30/40 DF67		Date: 09-Aug-00	No.: MA680006
Modified Article: Side Plate		Prepared by: E. Fukuyama	
From: Technical Services Dept., GTS Division			
Reason for Modification:	<input type="checkbox"/> Parts catalog correction <input type="checkbox"/> To facilitate assembly <input type="checkbox"/> Part standardization	<input type="checkbox"/> Vendor change <input type="checkbox"/> To improve reliability <input checked="" type="checkbox"/> Other	<input type="checkbox"/> To meet standards ()

The following parst have been registered as service parts.

New part number	Description	Q'ty	Int	Page	Index
A6801111	Side Plate : Front	0-1	-	11	26
A6801121	Side Plate : Rear	0-1	-	11	27

4.ORIGINAL TRANSFER (A680)

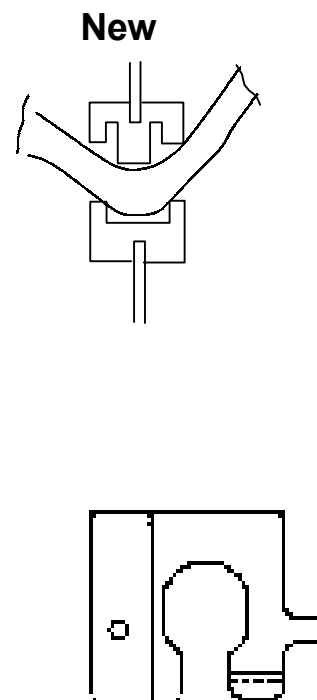
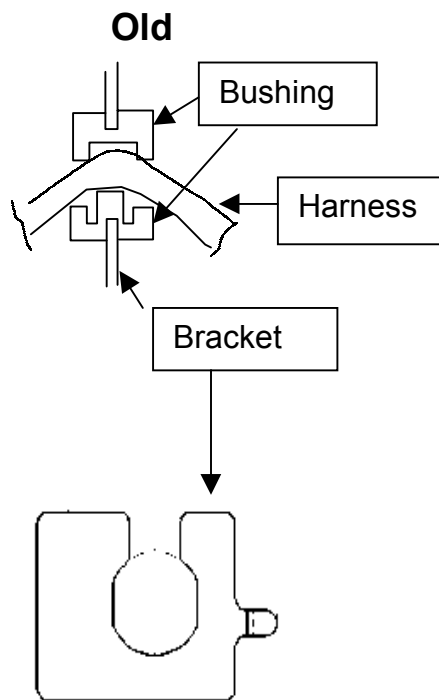


Model: NAD 30S/30/40 DF67		Date: 17-Oct-00	No.: MA680007
Modified Article: Interface Harness		Prepared by: E. Fukuyama	
From: Technical Services Dept., GTS Division			
Reason for Modification:	<input type="checkbox"/> Parts catalog correction	<input type="checkbox"/> Vendor change	<input type="checkbox"/> To meet standards ()
	<input type="checkbox"/> To facilitate assembly	<input checked="" type="checkbox"/> To improve reliability	
	<input type="checkbox"/> Part standardization	<input type="checkbox"/> Other	

When the DF is opened to full-vertical (90 degrees), stress is applied to the harness in the area of the bushing. This eventually causes a broken connection after this action has been repeated over and over.

The shape of the bushing bracket has been changed to minimize the bending angle of the harness when the DF is opened 90 degrees.

Old part number	New Part number	Description	Q'ty	Page	Index	Note
A6805800	A6805801	Interface Harness	1-1	19	4	



Model: NAD 30S/30/40 DF67

Date: 17-Oct-00

No.: MA680007

RAI Production

MODEL NAME	V/Hz	DESTINATION	CODE	SERIAL NO.
DF67	115/60 220/50	All (Ricoh)	A680-17	A7710040001
DF67	115/60 220/50	All (NRG)	A680-22	AQ70070001
DF67	115/60 220/50	All (Infotec)	A680-26	3Q78400583
DF67	115/60 220/50	All (Lanier)	A680-55	L0280040001
DF67	115/60 220/50	All (Ricoh)	A680-57	A7710840001
DF67	115/60 220/50	All (NRG)	A680-62	AS00850001

Model: NAD 30S/30/40 DF(DF67)		Date: 28-Mar-01	No.: MA680008
Modified Article: Holder - Belt Drive Roller		Prepared by: E. Fukuyama	
From: Technical Services Dept., GTS Division			
Reason for Modification:	<input type="checkbox"/> Parts catalog correction <input type="checkbox"/> To facilitate assembly <input type="checkbox"/> Part standardization	<input type="checkbox"/> Vendor change <input checked="" type="checkbox"/> To improve reliability <input type="checkbox"/> Other	<input type="checkbox"/> To meet standards ()

To prevent multi-sheet feeding, the contact surface area between the feed belt and separation roller has been reduced by changing the shape of the belt drive roller holder and the pick-up lever.

Note: The new holder and pick-up lever must be installed together as a set. This is because if the new holder (A6801822) is used with the old lever (A6801871), the decreased friction between the roller and paper may cause misfeeds.

Old part number	New part number	Description	Q'ty	Int	Page	Index
A6801821	A6801822	Holder – Belt Drive Roller	1-1	X/O	7	28
A6801871	A6801872	Pick-up Lever	1-1	X/O	7	18

RCL (Japan) Production

MODEL NAME	V/Hz	DESTINATION	CODE	SERIAL NUMBER
DF67	115/60	All (SAVIN)	A680-15	1B31820125
DF67	115/60, 220/50	All (Infotec)	A680-26	3Q78310001
DF67	115/60, 220/50	All (Ricoh)	A680-57	A7711820001
DF67	115/60, 220/50	All (NRG)	A680-62	AS01820001

Model: NAD 30S/30/40 DF (DF67)		Date: 24-Sep-03	No.: MA680009
Modified Article: Separation Roller		Prepared by: Y.Urushihara	
From: 1st Tech. Support Sec. Service Support Dept.			
Reason for Modification:	<input type="checkbox"/> Parts catalog correction <input type="checkbox"/> To facilitate assembly <input checked="" type="checkbox"/> Part standardization	<input type="checkbox"/> Vendor change <input type="checkbox"/> To improve reliability <input type="checkbox"/> Other	<input type="checkbox"/> To meet standards ()

Due to a vendor change, the part number of the separation roller has been changed.

Old part number	New part number	Description	Q'ty	Int	Page	Index	Note
A6801671	A8592241	Separation Roller	1	O/O	17	27	